

# HIKOKI

## CORDLESS RECIPROCATING SAW CR36DA

Item No.	Code No.	Description	No. Used	Remarks
1	373501	UPPER COVER	1	
2	373488	SHAFT (A)	1	
3	305574	HEX. SOCKET HD. BOLT (W/SP.WASHER) M5X16	12	
4A	375185	CHANGE SHAFT	1	
5	872822	O-RING (S-5)	2	
6	955479	RETAINING RING (E-TYPE) FOR D6 SHAFT	2	
7	307127	SEAL LOCK SCREW (W/SP. WASHER) M4X12	1	
8	323210	BOLT WASHER M4 (BLACK)	1	
9	373503	CHANGE KNOB	1	
10	373499	SPRING (B)	1	
11	373500	SPRING CAP	1	
12	373508	LEVER PLATE	1	
13	373490	SPRING (A)	2	
14	373487	PLUNGER HOLDER	1	
15	371382	BASE	1	
16	371383	BASE PLATE	1	
17	332662	HEX. SOCKET BOLT M5X12	2	
18A	375186	BASE LEVER SHAFT	2	
19	373504	BASE LEVER	1	
20	373506	FRONT COVER	1	
21	373507	ADJUSTING PIN	1	
22	373477	SEAL WASHER	1	
23	373478	DUST SEAL	1	
24	373479	SLEEVE PLATE	1	
25	373480	FELT WASHER	1	
26	373481	SEAL SLEEVE (A)	1	
27	373482	O-RING	1	
28	373483	SEAL SLEEVE (B)	1	
29	373484	METAL (A)	1	
30	373486	PLUNGER	1	
31	373489	PLATE (A)	1	
32	371368	SPIRAL RETAINING RING D16	1	
33A	379227	BLADE HOLDER	1	
34	371381	SLEEVE	1	
35A	374951	HOLDER PIN (A)	1	
36	371379	BLADE SPRING	1	
37A	379226	BLADE HOLDER COVER	1	
38	371367	RETAINING RING FOR D13 SHAFT	1	
39	371380	PIN	1	
40	373491	METAL PLATE	2	
41	371991	SEAL LOCK HEX. SOCKET HD. BOLT M6X20	1	
42	373492	ORBITAL GUIDE	1	
43	373494	GEAR	1	
44A	375191	CONNECTING PIECE	1	
45	373959	NEEDLE BEARING	1	
46	6803BB	BALL BEARING 6803	1	
47	373485	METAL (A)	1	
48	373498	PACKING	1	
49A	375192	GEAR COVER	1	
50	373527	O-RING (I.D 31.5)	1	
51	328707	TAPPING SCREW (W/FLANGE) D5X30 (BLACK)	4	
52	6201VV	BALL BEARING 6201VV	1	
53A	314430	SLOTTED HD. SCREW (SEAL LOCK) M4X10	2	

\* ALTERNATIVE PARTS

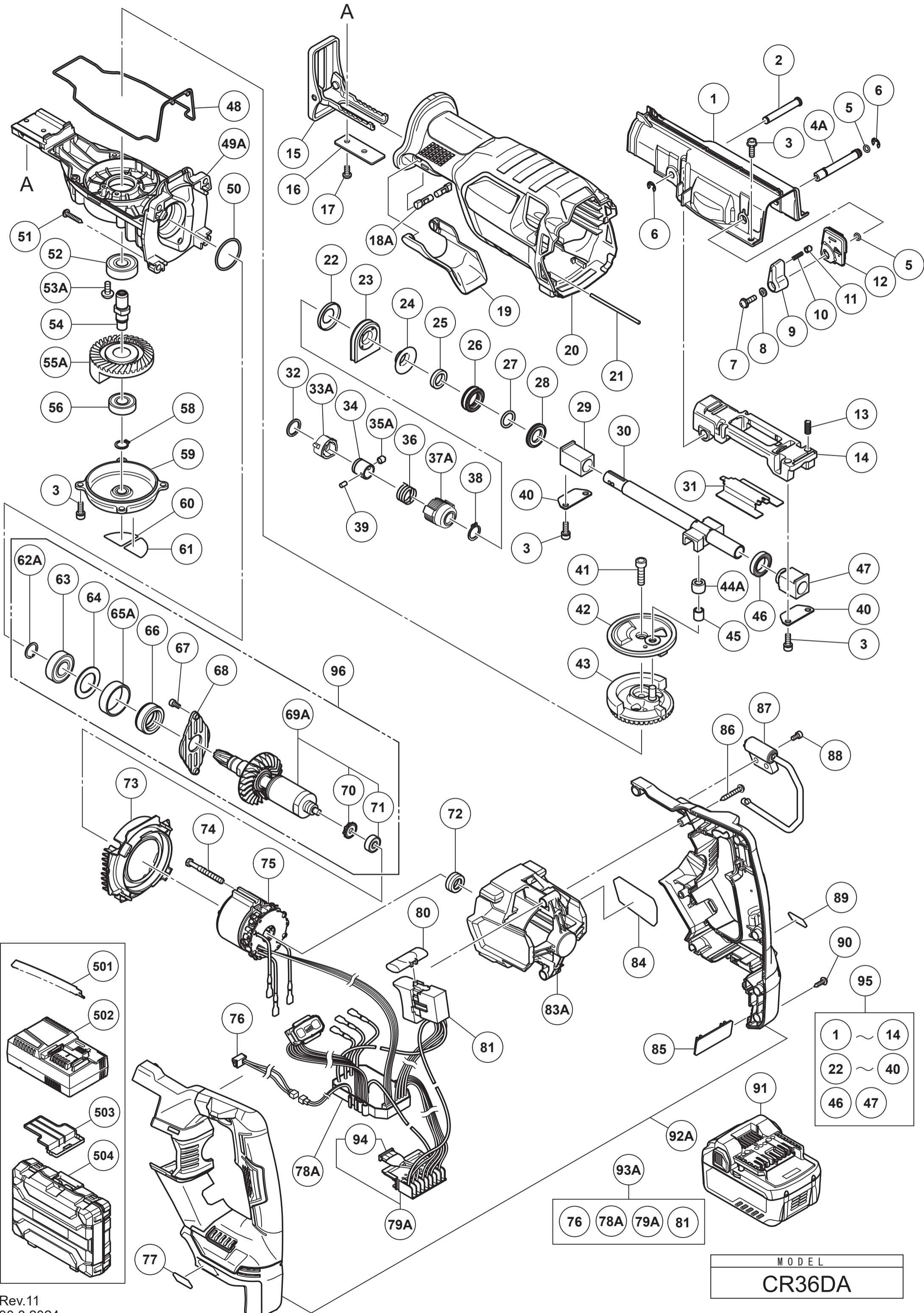
# HIKOKI

## CORDLESS RECIPROCATING SAW CR36DA

Item No.	Code No.	Description	No. Used	Remarks
54	373493	SPINDLE	1	
55A	375194	COUNTER GEAR	1	
56	6001VV	BALL BEARING 6001VV	1	
58	939542	RETAINING RING FOR D12 SHAFT (10 PCS.)	1	
59	373510	UNDER COVER	1	
60		CAUTION SEAL (B)	1	
61		CAUTION SEAL (A)	1	
62A	375195	RETAINING RING D15	1	
63	6002VV	BALL BEARING 6002VVCMP2L	1	
64	373511	WASHER D34.8	1	
65A	375196	BUSHING	1	
66	373513	DAMPER	1	
67	949818	HEX. SOCKET HD. BOLT M5X8 (10 PCS.)	2	
68	373514	BEARING COVER	1	
69A	376165	ROTOR ASS'Y	1	INCLUD.70,71
70	373515	DUST SEAL (606)	1	
71	606ZM	BALL BEARING 606VV	1	
72	373516	RUBBER BUSH	1	
73	373517	FAN GUIDE	1	
74	981824	HEX. HD. TAPPING SCREW D4X45	2	
75	341012	STATOR SENSOR PCB	1	
76	373528	LED	1	
77		MV LABEL (B)	1	
78A	373524	CONTROLLER	1	SINCE 1.2021
79A	377278	BATTERY TERMINAL ASS'Y	1	INCLUD.94 SINCE 1.2021
80	319760	PUSHING BUTTON	1	
81	373522	DC-SPEED CONTROL SWITCH	1	
*83A	373519	HOUSING	1	
*83A	373519M	HOUSING	1	FOR USA,CAN
84		NAME PLATE	1	
85	373521	BATTERY RUBBER (B)	1	
86	305490	TAPPING SCREW (W/FLANGE) D4X30 (BLACK)	2	
87	371387	HOOK	1	
88	371992	SEAL LOCK HEX. SOCKET HD. BOLT M5X10	2	
89		MV LABEL (A)	1	
90	339250	TAPPING SCREW (W/FLANGE) D4X20	6	
*91	371750	BATTERY BSL 36A18 (EUROPE,AUS,NZL)	2	INCLUD.503
*91	373320	BATTERY BSL 36A18 (CHN)	2	INCLUD.503
*91	372120	BATTERY BSL 36B18 (EUROPE,AUS,NZL)	2	INCLUD.503
*91	372122	BATTERY BSL 36B18 (THA)	2	INCLUD.503
92A	376844	HANDLE (A).(B) SET	1	
93A	377280	SWITCH CONTROLLER ASS'Y	1	INCLUD.76,78A,79A,81
94	377279	FUSE	1	SINCE 1.2021
*95	382498	GEAR BOX COMPLETE	1	INCLUD.1,2,3(4 PCS.),4A-14,22-40,46,47 FOR EUROPE
*96	382499	ROTOR COMPLETE	1	INCLUD.62A-69A FOR EUROPE
		STANDARD ACCESSORIES		
*501	370683	CURVED BLADES NO.141(S)150L P.14(3 PCS.)	1	
*501	371902	CURVED BLADES NO.158 200L P.8 (3 PCS.)	1	FOR USA,CAN
502		CHARGER (MODEL UC 18YSL3)	1	
503	329897	BATTERY COVER	1	
504	373526	CASE	1	
		OPTIONAL ACCESSORIES		

\* ALTERNATIVE PARTS





- |    |   |    |
|----|---|----|
| 1  | ~ | 14 |
| 22 | ~ | 40 |
| 46 |   | 47 |

- |    |     |     |    |
|----|-----|-----|----|
| 76 | 78A | 79A | 81 |
|----|-----|-----|----|

MODEL  
CR36DA